

RP100 DATA

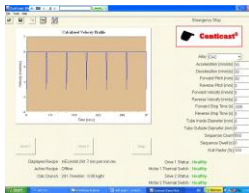


continuous casting machines

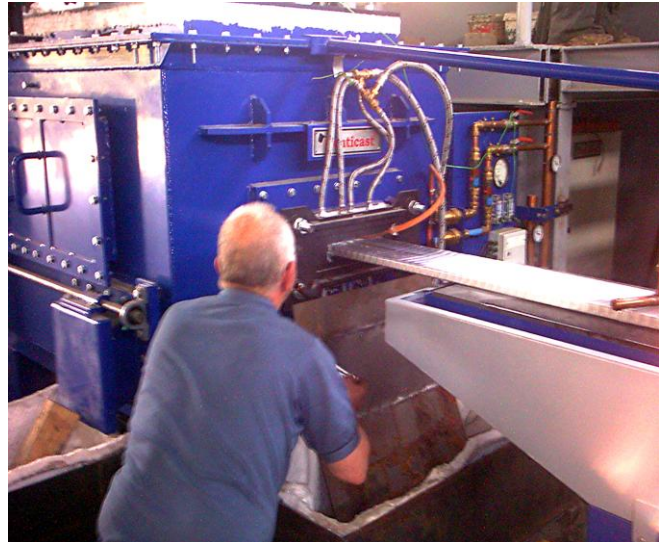
RP100 HORIZONTAL CONTINUOUS CASTING MACHINE FOR PRECIOUS METALS

FEATURES OF **conticast**[®] SYSTEM:-

- PROVEN GRAPHITE CRUCIBLE TECHNOLOGY FOR LIQUID METAL CONTAINMENT – PROVIDES NATURAL DEOXIDIZING ENVIRONMENT
- TOP QUALITY GRAPHITE TOOLING FOR CONSISTANT REPEATABLE PRODUCT
- SPECIAL ALLOY HIGH THERMAL CONDUCTIVITY **ultracoolers**[®] FOR OPTIMUM HEAT TRANSFER FROM DIE TO COOLING WATER.
- LATEST GENERATION OF AC SERVOMOTORS FOR PRECISE WITHDRAWAL.
- IBM COMPATIBLE PC OPERATING ON WINDOWS XP[®] PROVIDING PROGRAMMABLE WITHDRAWAL PROFILES FOR THE AC SERVOMOTOR.



- PROVEN GRAPHITE CRUCIBLE TECHNOLOGY FOR LIQUID METAL CONTAINMENT – PROVIDES NATURAL DEOXIDIZING ENVIRONMENT
- INTRINSICALLY SAFE LOW VOLTAGE HEATERS
- THE **conticast**[®] RP RANGE OF CONTINUOUS CASTING MACHINES ARE USED FOR THE MANUFACTURE OF SILVER, NICKEL SILVER, GOLD AND OTHER PRECIOUS METALS IN BAR FORM, TUBES, SECTIONS AND STRIP
- THE RP MACHINES ARE PARTICULARLY USEFUL FOR PRODUCING SEMI FINISHED SHAPES FOR THE PRODUCTION OF COINS, MEDALS, JEWELLERY, DENTAL ALLOYS, BRAZING ALLOYS ETC
- THE **conticast**[®] RP RANGE OF CONTINUOUS CASTING MACHINES ARE NORMALLY USED AS COMBINED MELTERS/CASTERS



MAXIMUM PRODUCT DIMENSIONS

- STRIP – 200mm WIDE
- ROUND – 75mm DIAMETER

MAXIMUM PRODUCTION RATE (depending on alloy & strand dimensions)

- COMBINED MELTING/CASTING – 165kg/hour

MAXIMUM OPERATING TEMPERATURE – 1350C

CRUCIBLE CAPACITY – 12 litres

CRUCIBLE SYSTEM – GRAPHITE

HEATER SYSTEM – GRAPHITE

POWER RATING – 75kW

SUPPLY VOLTAGE – 380/440V 3 PHASE 50/60Hz

HEATER VOLTAGE – 24V 3 PHASE 50/60Hz

POWER CONTROL – PHASE ANGLE/BURST FIRING SCR REGULATOR

WITHDRAWAL SYSTEM – COMPUTER CONTROLLED AC SERVOMOTOR

COMPUTER SYSTEM – WINDOWS XP PROFESSIONAL[®]



www.conticast.com

Tel. + 34918874039

CONTICAST (R)
Part of HORMESA Group
Las Marineras 13-17, E-28.864
Ajalvir, Madrid (ESPAÑA)

Spain, Thailand, Colombia, Mexico, Argentina,
USA, UK



www.hormesa.com

Fax + 34918844382